
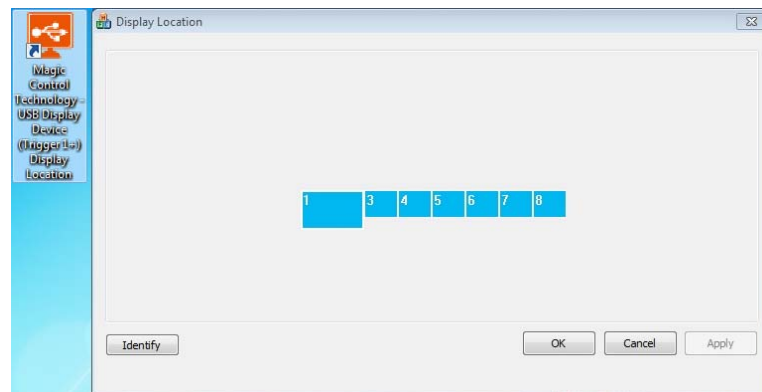


SETTING DISPLAY LOCATION ON WINDOWS 7

1. Please find the short cut  “**USB Display Device (Trigger1+) Display Location**” at the desktop of your computer, then double click it.
2. It will pop a screen sheet “Display Location”.



3. You could arrange the display location now. Then, click the “**Apply**” to set the display location on Windows 7.